



GRET



HEALTH

IMPROVING POPULATIONS' HEALTH
THROUGH INTEGRATED APPROACHES

KEY FIGURES

(IN 2024)

+ than 25

PROFESSIONALS

+ than 8

PROJECTS AND STUDIES

BUDGETS FROM

40,000 TO 2 M€

Actions conducted
from territorial
to national level in
partnership with:

+ than 15

OPERATIONAL PARTNERS

1 RESEARCH PARTNER

Supported by:

5 FINANCIAL PARTNERS

GRET'S WORK IN THE AREA OF HEALTH

GRET WORKS ON PRIMARY AND COMMUNITY HEALTHCARE, an essential tier enabling populations to have fast access to healthcare for common pathologies, to prevention and to actions promoting health. These actions are aimed at achieving **Universal health coverage (UHC)**, in addition to improving financial access to healthcare, in particular for the most vulnerable.

Its action also focuses on **determinants of health** with a view to health systems strengthening as a complement to strategies enabling access to a decent income, food security, water and sanitation, education and employment, and reduction of inequalities.

COUNTRIES OF INTERVENTION SINCE 2010

Burkina Faso ■ France ■ Guinea ■ Haiti ■
Madagascar ■ Mauritania ■ Niger

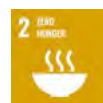


EVERY YEAR, GRET'S ACTIONS IN FAVOUR OF HEALTH BENEFIT:

- **Health service users**, more than half of whom are women of child bearing age or girls.
- **But also:** men, young people, children under the age of 5, vulnerable families, staff in health institutions and community relays, local authorities, and civil society organisations.



THE ACTIONS CONDUCTED
BY GRET IN THE AREA OF
HEALTH CONTRIBUTE TO SDGS
1, 2, 3, 5 AND 10.



Health workers being trained
as part of the PASMI project
in Madagascar.

“ Although GRET is not a medical NGO, it has been working for several years to **strengthen primary and community healthcare systems**. The projects conducted by GRET and supported by the DIC contribute to national policies and their local deployment, enable governance to be strengthened, and include promotion and prevention actions with various stakeholders. ”

Myriam LANDAU, health focal lead,
Department of International Cooperation of Monaco

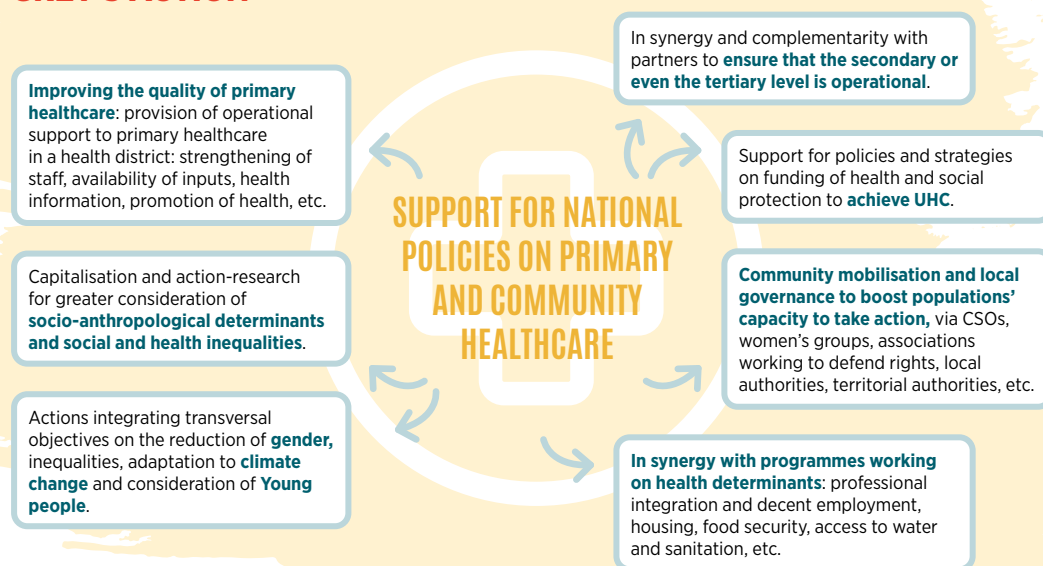
GRET'S APPROACH TO HEALTH

For more than 30 years, nutrition projects took a community-based approach, which integrated health and contributed to informing national policies. Today, our projects aim to take a global approach to primary healthcare, integrating socio-anthropological determinants and the reduction of gender inequalities, the specific needs of young people, and the impact of climate change.

GRET IS DISTINGUISHED BY ITS MULTI-SECTORAL EXPERTISE, WHICH ENABLES GREATER CONSIDERATION OF HEALTH DETERMINANTS.

GRET favours territorial approaches, aimed at involving influential stakeholders in the territory in order to improve populations' health and develop innovative actions, such as the One Health approach.

GRET'S ACTION



PROMOTING HEALTH

In Niger, certain activities are designed for couples, such as home visits to talk about birth spacing, but also specifically for men. This is the case of "the School for husbands", which promotes the role of fathers and husbands in children's education and health. Strengthening their participation is essential for GRET, which recognises the prominent part they have to play in improving women's and children's health, and reducing gender inequalities.

“ One of GRET's specificities is the fact that it **approaches health in a territorial manner**. Health systems are sectoral and a health centre's service area is often different to the administrative division. We bring together stakeholders — including those who are not directly part of the health system — so that they can work jointly on common issues in a territory in order to best meet populations' needs. ”

Elodie MACOILLARD, health projects manager at GRET

Monitoring medicine stocks as part of the RIMSANTE project in Mauritania.



BETTER UNDERSTANDING OF HEALTH PROJECTS IN THEIR SOCIAL CONTEXTS

Health projects are often constructed taking quantitative approaches, based on health and service use indicators. These descriptive and/or epidemiological methods do not provide much information on the complexity of the social environments in which projects take place.

GRET attaches particular importance to understanding social determinants, local power relationships and representations of health in different contexts. Mobilising **socio-anthropological studies in health projects** makes it possible for example to better understand the position of community health workers in a social and institutional fabric, and their capacity to drive changes in the latter, enabling documentation of various levers and constraints around use and request of healthcare.



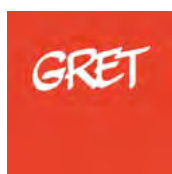
A farmer in charge of relaying good agricultural and livestock farming practices as part of the One Health project in Guinea.

ABOUT GRET

GRET is an international solidarity organisation whose objective is to improve the most vulnerable populations' living conditions and promote social justice while conserving our planet.

Founded in 1976, the GRET association is now present in Africa, Asia and Latin America. It has multiple areas of expertise: natural resources, local essential services, cities and housing, integration and employment, nutrition and health, food systems, land governance, and inclusive economies and finance.

Learn more at: gret.org



CONTACTS:

Clémence Boule Martinaud, "Health: nutrition and social protection" team leader, martinaud@gret.org
Claire Costis, "Health: nutrition and social protection" projects manager, costis@gret.org
Élodie Macouillard, health projects manager, macouillard@gret.org

TO LEARN MORE

ABOUT GRET'S KEY ACTIONS IN THE AREA OF HEALTH

- 🚩 [Mother and child health in Mauritania](#)
- 🚩 [Access to healthcare in Niger](#)
- 🚩 [One Health approach in Guinea](#)
- 🚩 [Mother and child health in Haiti](#)
- 🚩 [Access to healthcare in Madagascar](#)
- 🚩 [Interview on "Health: improving access to quality healthcare"](#)
- 🚩 [Nutrition brochure](#)