



iSEA is a first business incubator in Cambodia dedicated to water supply entrepreneurs. We are a passionate professionals team with expertise on piped water supply business over 10 years of experience in Cambodia. We provide both business management and technical support to water supply entrepreneurs in Cambodia.

iSEA also provides consultant services in order to guarantee the quality of the construction, business operation and services.

**Innovative Services,**

**Engineering & Advisory**



# iSEA's services

## Feasibility & Detailed Studies

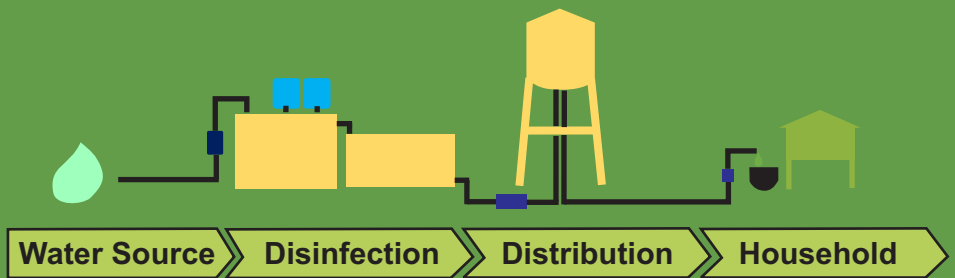
### Feasibility Studies:

- 💧 Investment estimation
- 💧 Market demand
- 💧 Business plan

### Detailed Studies:

- 💧 To build a water supply system
- 💧 To calculate a bill of quantities (BoQ)
- 💧 To design detail drawing for construction

## Construction Work Supervision



Construction work supervision: it aims at securing the quality of the construction.

- 💧 To build water supply with good quality
- 💧 To check whether it is followed technical specifications

## Training & Monitoring

### Customer management and billing system:

- 💧 Controlling billing in datasheet by odometer & customer use
- 💧 Cross checking billing with revenue and liability
- 💧 Inventory recording and depreciation
- 💧 Financial and cash flow statements

### Technical training:

- 💧 Water quality test (raw & clear), jar test, measure flow rate, pumping capacity measurement, chemical feeding dosages
- 💧 Operation and maintenance of water supply system

### Training for monitoring:

- 💧 Production monitoring
- 💧 Distribution and number of connections monitoring
- 💧 Water quality monitoring

# FAQs

I am on the process of requesting a licence from Ministry of Industry and Handicraft (MIH), however the MIH requires me to do a feasibility study of the project, what can I do?

iSEA can help by supporting you to conduct a feasibility study of your coverage area for a required period of business and water treatment plant capacity.

I have adequate budget to set up a water supply system network but I am lacking the technical knowledge on how to set up the piped water supply network.

iSEA has service-products to provide advisory as well as technical assistance in installing water supply systems. Furthermore, iSEA provides a detailed design and construction work supervision, which allows a better knowledge of the state of existing networks and thus to better plan their expansion.

Investing in a water supply system will require huge expenses in the beginning. How can I be sure that this investment will not be at a loss and that the business will be profitable?

To secure and ensure the interest of such high investments, iSEA can provide you with two essential documents: a feasibility study and business plan. Both will help you know the potential of your business, and have a precise idea of your yearly income, expense and revenue for the period of project.

I am a new investor in water supply, but I am not an expert in financial control and management. Can iSEA help me out with this?

iSEA provides financial training and can set up financial systems in order to effectively manage your business's cash flow.

I have already set-up a piped water supply network, but I don't know how to maintain and operate it.

iSEA can provide you with the technical training to operate and maintain your water supply network. iSEA has indeed real expertise in all the following water supply areas: water treatment plant, water pumping system, distribution network & non revenue water management.



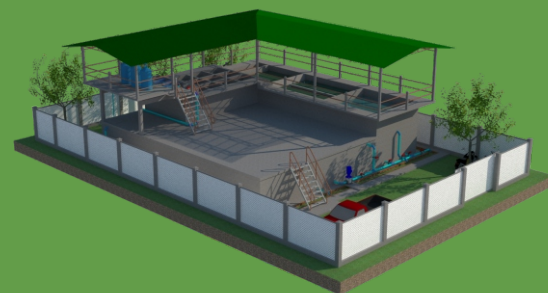




## The benefit of consulting iSEA

All documents and reports produced by iSEA will support for applying a new license or licence extension. Moreover, the study document also can apply as a loan application to banks or social investors. If requested, iSEA can also support the entrepreneur in his search for a loan .

Finally, iSEA can help you to optimize the system, meet quality standard, respect technical designs, minimize the cost and maximize the profit.

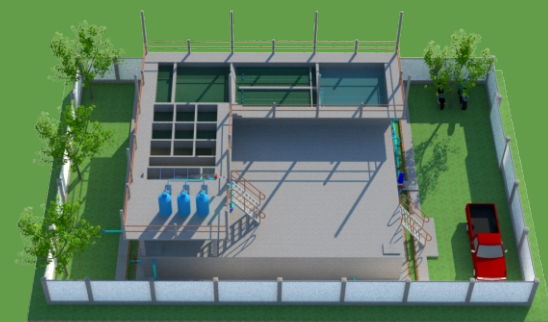


## Contact iSEA

No.22, St.330, Boeung Keng Kong III, Phnom Penh, Cambodia

Tel: (855-23) 221 032

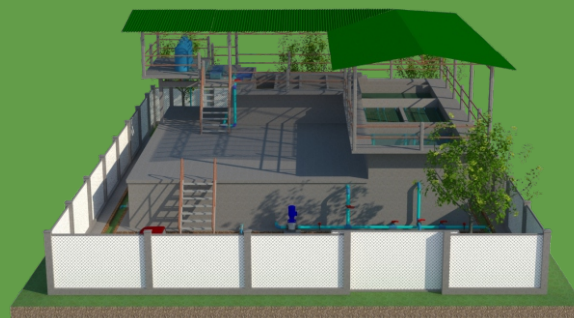
Email: [info@iseacambodia.com](mailto:info@iseacambodia.com)



## Communications and marketing contact

Chhim Tit Cresna, [cresna@iseacambodia.com](mailto:cresna@iseacambodia.com)

Tel: (855) 88 3355 000



**FIND**



**FONDS  
SUEZ ENVIRONNEMENT  
INITIATIVES**